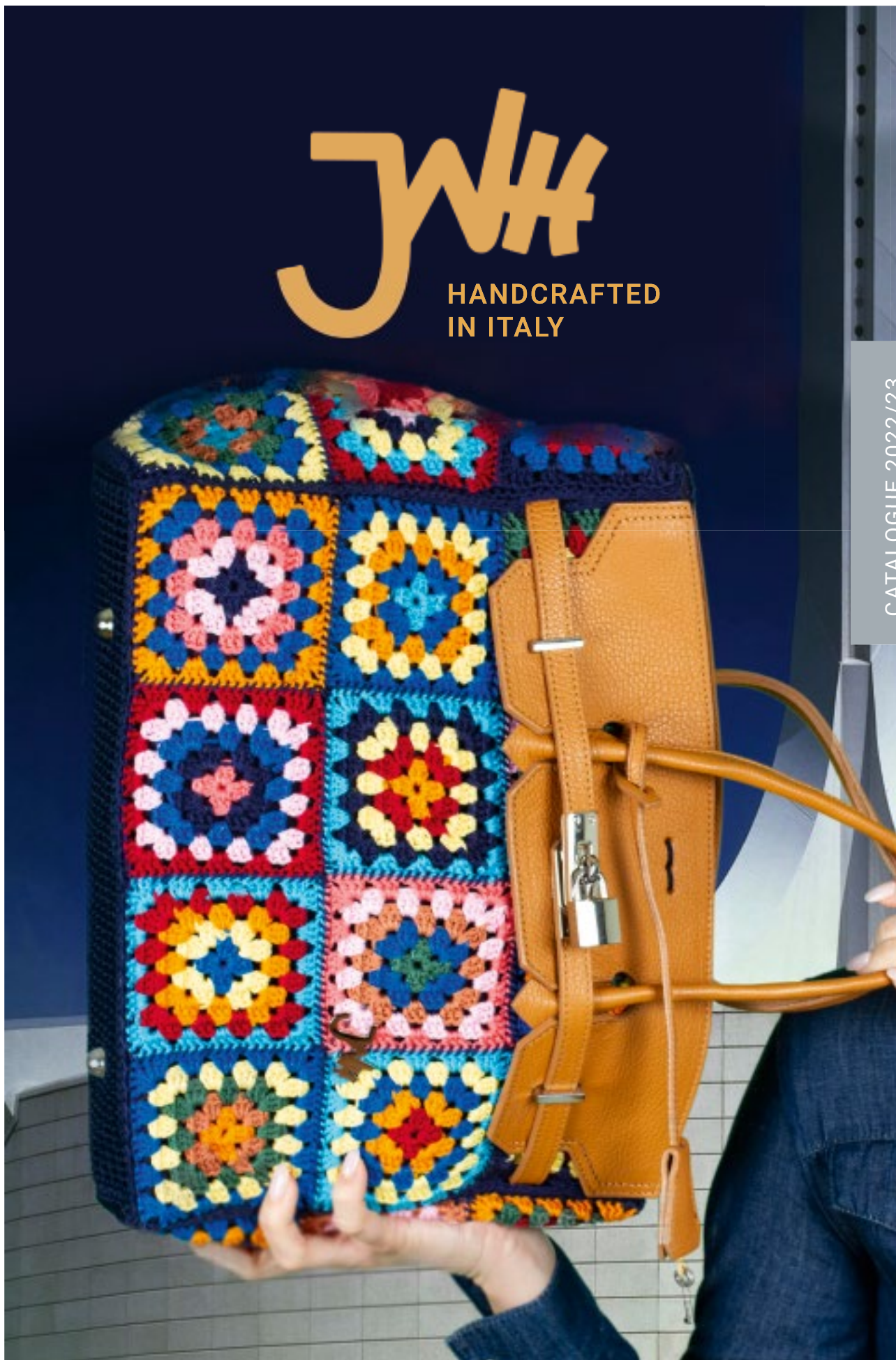


JW

HANDCRAFTED
IN ITALY

CATALOGUE 2022/23



WHO WE ARE

JNH is a totally female entrepreneurial project born in South Tyrol by three women moved by the deep passion for the tradition of craftsmanship and the love for design and contemporary trends.

Since 2021 JNH has been producing exclusive and high quality eco-leather and crochet bags, for every day and for special occasions, hand-made by a network of expert craftsmen from South Tyrol, already the cradle of Italian craftsmanship, so that every bag is a great little work of art.

ARTISAN PRODUCTION MADE IN ITALY

Completely made in Italy, the production of JNH bags is characterized by the constant search for precious materials, the meticulous attention to detail, details and

finishes, combined with professionalism and craftsmanship quality and an always original design. All this makes JNH products unique and elegant, ideal for every occasion and for every woman who wants to be refined and unique. JNH bags and accessories stand out for their tangible sturdiness, the extreme refinement of workmanship and attention to detail, such as to highlight the design, uniqueness and preciousness of the product even more.

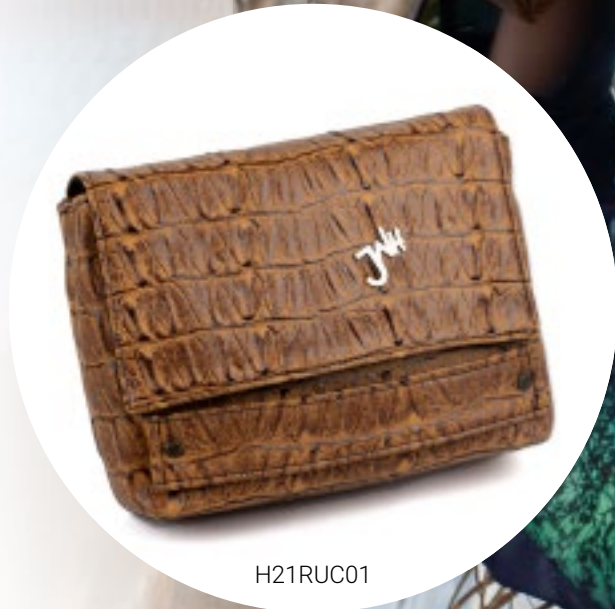
JNH for third parties

The artisanal production of JNH Made in Italy bags does not consist only of the own brand collection. JNH makes its network of artisans available to brands and retailers for tailor-made creations and productions.

SPRING SUMMER

RUDI CROCO

Exterior:	eco leather
Inside:	canvas and cotton. Handcrafting with the latest Style-Vil and Decovil strengthens the structure of the bag, making it softer and more pleasant to the touch.
Care:	stain cleaning only with a soft damp cloth, do not machine wash, do not bleach, do not tumble dry, do not iron, do not dry clean.
Weight (kg)	0.3 kg
Measurements (cm)	25 x 7 x 19 cm



H21RUC01

Variants available:



rudi black
H21RUN01

FRANGE - PINK



- Exterior: sturdy canvas fabric
- Inside: sturdy canvas fabric padding, with hardener
- Bangs: pink color raffia
- Closures: none
- Handles: in belt
- Care: spot cleaning only with a soft damp cloth, do not machine wash, do not bleach, do not tumble dry, do not iron, do not dry clean.

Measurements (cm) 30 x 28 x 8 cm

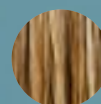


H22FRP01

Variants available:



raffia light blue
H22FRA01



raffia wood
H22FRL01



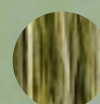
raffia black
H22FRN01



raffia wisteria
H22FRC01



raffia verde
H22FRV01



raffia natural green
H22FRD01

LAURA ORO

Exterior:	faux leather in gold, reptile print
Inside:	sturdy canvas padding, with hardener
Closures:	central magnetic button inside, a snap hook inside that closes the top
Handles:	very sturdy faux leather in white color
Pendant:	detached faux leather in white color
Logo keychain:	smoke-colored steel
Care:	spot cleaning only with a soft damp cloth, do not machine wash, do not bleach, do not tumble dry, do not iron, do not dry clean
Weight (kg)	1.0 kg
Measurements (cm)	32 x 33 x 13 cm



H22LA001

Variants available:



white

H22LAB01



black

H22LAN01

SUSI MELOGRANO - ROSSA



- Exterior: eco leather and canvas with mandala pattern print
- Inside: cotton and canvas
- Closures: La chiusura e catenella sono in argento placcato.
- Shoulder strap: eco leather
- Care: for spot cleaning use only a soft damp cloth, do not machine wash, do not bleach, do not tumble dry, do not iron, do not dry clean.
- Weight (kg) 0.38 kg
- Measurements (cm) 25 x 16 x 5 cm



H22SUI01

Variants available:



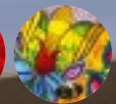
orange

H22SUA01



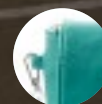
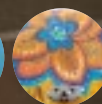
red mandala

H22SUM01



metallic blue mandala

H22SUB02



metallic green mandala

N22SUV02

PORTAMONETE - AZZURRO

Exterior: spaghetti yarn
Inside: unlined
Care: spot cleaning only with a soft damp cloth, do not machine wash, do not bleach, do not tumble dry, do not iron, do not dry clean.
Weight (kg) 0.7 kg
Measurements (cm) 11 cm



N21POALI

Variants available:



blue crochet
N21POBLI



black crochet
N21PONLI



salmon crochet
N21POS01

CROCHET CLUTCH MARRONE



Exterior:	spaghetti yarn
Inside:	sturdy canvas padding, with hardener
Closures:	magnet closure
Handles:	none
Care:	spot cleaning only with a soft damp cloth, do not machine wash, do not bleach, do not tumble dry, do not iron, do not dry clean.
Weight (kg)	0.27 kg
Measurements (cm)	22 x 15 x 3 cm



N22CCB01

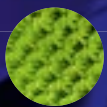
CROCHET CLICK - FUCSIA FLUO

Exterior:	fuchsia fluo chain yarn
Inside:	sturdy canvas padding with hardener
Closures:	click clack
Handles:	a bamboo handle with antique gold-colored steel attachments
Care:	spot clean only with a soft damp cloth, do not machine wash, do not bleach, do not tumble dry, do not iron, do not dry clean.
Weight (kg)	0.64 kg
Measurements (cm)	25 x 20 x 16 cm



N22CLF01

Variants available:



lime green
N22CCV01

CROCHET TEA - ROSA

Exterior:	spaghetti crochet yarn.
Inside:	cotton padding, with hardener
Closures:	cassette-style, opens from left to right with a click.
Handles:	no handle, but a hook on the back of the belt. The belt buckle is made of Swarovski
Belt:	4 x 120 cm
Care:	spot cleaning only with a soft damp cloth, do not machine wash, do not bleach, do not tumble dry, do not iron, do not dry clean.
Weight (kg)	0.31 kg
Measurements (cm)	17 x 14 x 6 cm



N22TER01

Variants available:



white

N22TEB01



yellow

N22TEG01



brown

N22TEM01



black

N22TEN01

AUTUMN-WINTER

OBKI PETROLIO

Exterior: two different qualities of faux leather

Inside: canvas and cotton. Handcrafting with the latest Style-Vil and Decovil strengthens the structure of the bag, making it softer and more pleasant to the touch.

Care: spot cleaning only with a soft damp cloth, do not machine wash, do not bleach, do not tumble dry, do not iron, do not dry clean.

Weight (kg) 1.0 kg

Measurements (cm) 35 x 18 x 25 cm



H210BP02



Variants available:



bronze

H210BB01



medium blue

H210BB02



small gray

H210BG01



medium yellow

H210BY02



medium gray

H210BG02



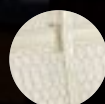
medium leo

H210BL02



small yellow

H220BG01



big white

H210KB03



red medium

H210KR02

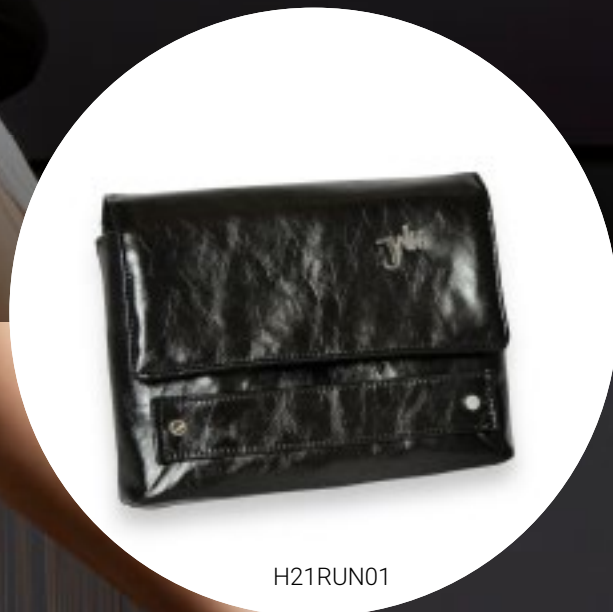


ostrich medium

neon green
H210BS01

RUDI NERA

- Exterior: faux leather
- Inside: canvas and cotton. Handcrafting with the latest Style-Vil and Decovil strengthens the structure of the bag, making it softer and more pleasant to the touch.
- Care: spot clean only with a damp morbi-do cloth, do not machine wash, do not bleach, do not tumble dry, do not iron, do not dry clean.
- Weight (kg) 0.3 kg
- Measurements (cm) 25 x 7 x 19 cm



H21RUN01

Variants available:



croco leather
H21RUC01



KNIT PEPPERMINT PETTY

Exterior: South Tyrolean mountain sheep wool, natural color plum and green, dyed with all-natural pigments extracted from plants. On the two versatile sides, a twist.

Inside: Sturdy natural canvas padding, black color, with natural hardener

Closures: none

Handles: genuine leather handles. One shoulder strap handmade from the same wool.

Care: spot cleaning only with a soft damp cloth, do not machine wash, do not bleach, do not tumble dry, do not iron, do not dry clean.

Weight (kg) 1.7 kg

Measurements (cm) 51 x 36 x 14 cm



M22PEV01

KNIT CLARA



Exterior: South Tyrolean mountain sheep wool, natural gray color. The buckle is made of swarovski stone

Inside: sturdy canvas padding, with hardener

Closures: Magnet closure

Handles: without handle. To be carried as a "Clutch"

Care: spot cleaning only with a soft damp cloth, do not machine wash, do not bleach, do not tumble dry, do not iron, do not dry clean.

Weight (kg) 0.3 kg

Measurements (cm) 20 x 4 x 14 cm



M22CLG01

VICKY - MARRONE

- Exterior: high quality eco leather, sturdy and durable
- Inside: canvas fabric padding, with hardener
- Closures: 41 cm zipper
- Handles: two very sturdy faux leather handles, length-adjustable shoulder strap with snap hooks that make it removable.
- Care: spot cleaning only with a soft damp cloth, do not machine wash, do not bleach, do not tumble dry, do not iron, do not dry clean.

Weight (kg) 1.28 kg

Measurements (cm) 42 x 35 x 14 cm



H22VIM01


Contacts

staff@jnh-accessories.com

jnh-accessories.com

 www.facebook.com/JNHACCESSORIES

 www.instagram.com/jnh_accessories/

 +39 380 631 2028
+39 335 786 46 70



jnh-accessories.com